

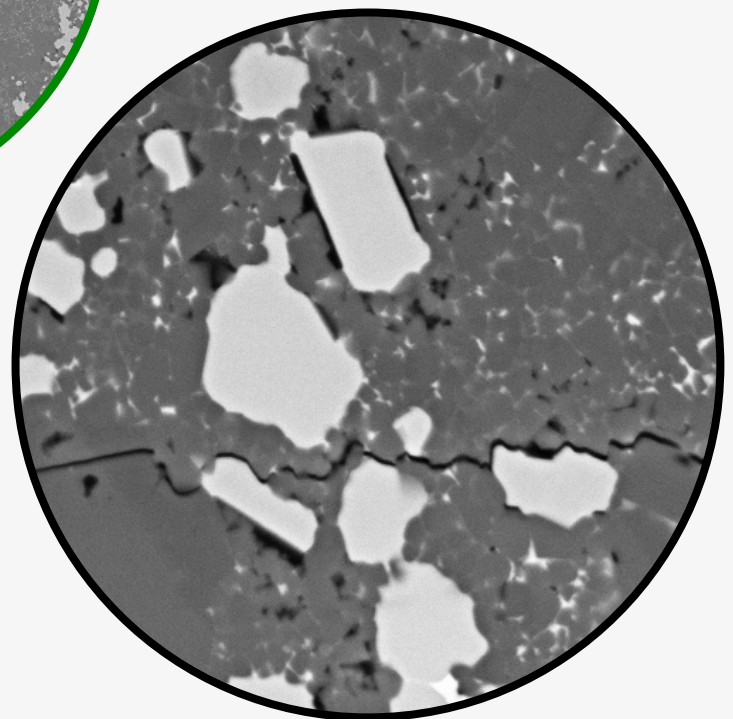
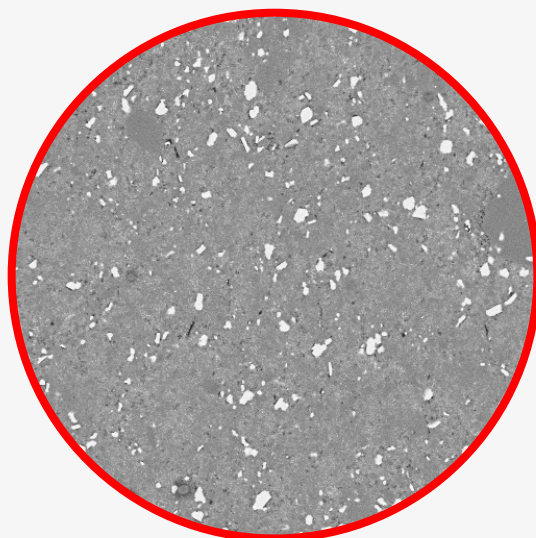
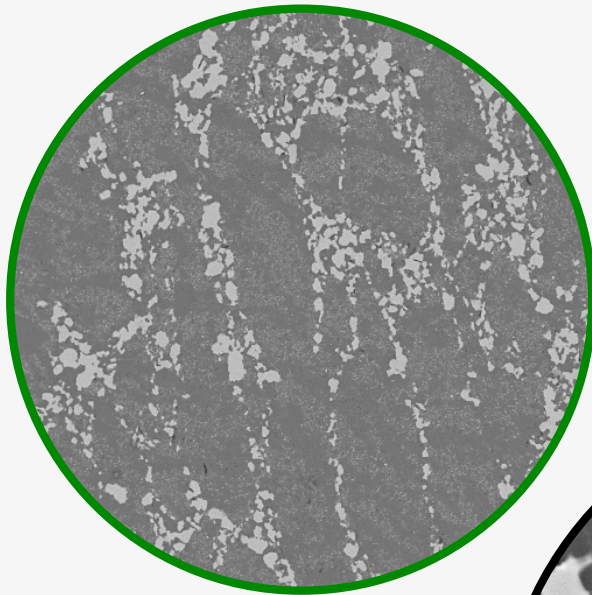


ISSN 2543-9901

JOURNAL OF CASTING & MATERIALS ENGINEERING

AGH UNIVERSITY OF SCIENCE AND TECHNOLOGY
FACULTY OF FOUNDRY ENGINEERING

QUARTERLY
Vol.2 No.2 /2018



JCME



AGH UNIVERSITY OF SCIENCE AND TECHNOLOGY PRESS KRAKOW 2018